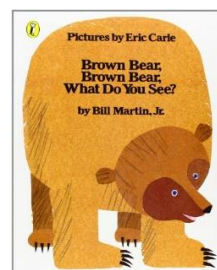
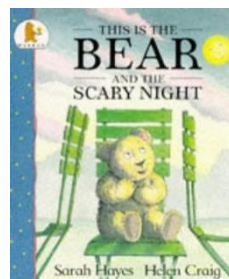
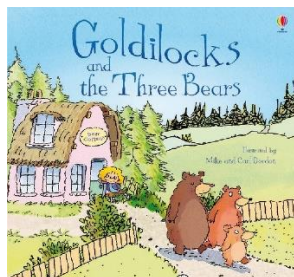
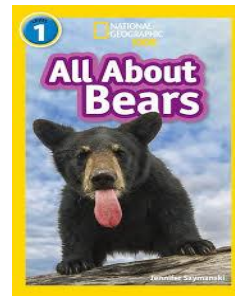
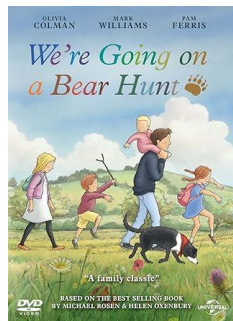
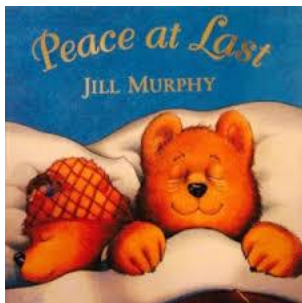


# Nursery Newsletter Autumn 1 24'

## Our topics are 'Bears' and 'Autumn'.

A range of texts, both fiction and non-fiction will be linked to our topics. The nursery's continuous provision and adult led learning will be linked to the 'book of the week'. We will be drawing attention to the days of the week, what the weather is doing and observing signs of the changing seasons.

OUR FIRST HALF-TERM OF THE ACADEMIC YEAR WE WELCOME BEAR CUBS, OLD AND NEW



For those that are new to nursery please look out for a weekly Tapestry post informing details of our 'book of the week', activities on offer and the learning objectives. Other random posts will include notices, as well as individual observations of your child. Please add your own posts to share experiences from home and family life, we love to see what you get up to!



(From right to left, top to bottom)

Elizabeth and Anna are full time.

Rebecca is in nursery on a Monday and a Thursday.

Helen is in nursery on a Tuesday, Wednesday and Friday.

We also have Maria and Lisa come and join us to supervise lunchtime cover.

We will be advising Key persons over the forthcoming weeks. Elizabeth and Rebecca pair up and Anna and Helen pair up as Key persons.

If you would like to speak to a member of the nursery team please email us- [nursery@st-williams.norfolk.sch.uk](mailto:nursery@st-williams.norfolk.sch.uk), call 01603 434128 or message us via Tapestry and we will get back to you.

Elizabeth, Anna, Helen and Rebecca